



The AAE-Series: Active Arc Extinguisher

Rated Current from 5A up to 1000A
Rated Voltage from 60VDC up to 2000VDC



General:

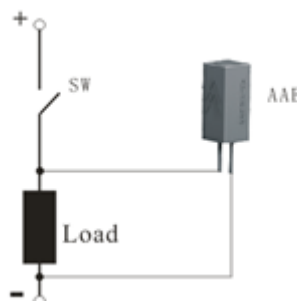
AAE is the world's first active electronic arc extinguisher. It was developed by KS to meet the need of arc extinguishing in relays, breakers, button switches and other mechanical switches. It inhibits arcing or decreases the arcing time. It greatly increases the electrical operation life of the mechanical switch. It improves the current breaking ability and rated operation voltage of the mechanical switch and greatly reduces the maintenance. It can be used for new energy vehicles, rail transit, ships and fields of automation control. It's a safe and green product.

Features:

1. It only needs to be connected with the load , it is very convenient to use
- 2.Small size
- 3.No energy consumption
- 4.High cost effective

Operation Principle:

AAE is connected with the load in parallel. In the moment of SW breaking the AAE detects arcing or approaching arcing, then it puts out a high energy pulse signal to the load. That causes, that the voltage on both the ends of SW is lower than the arcing voltage, which achieves the arc extinguishing purpose.





Typical Application:

Example 1 shows how KS-AAE is improving the rated voltage. The combination of 1 common relay 10A/30VDC and 1 KS-45AAE10 is substituting the much bigger and more expensive 10A/450VDC relay.

Example 2 shows how KS-AAE is extending the lifetime of commercially available devices by a multiple, when it is combined with it.



Product Code:

